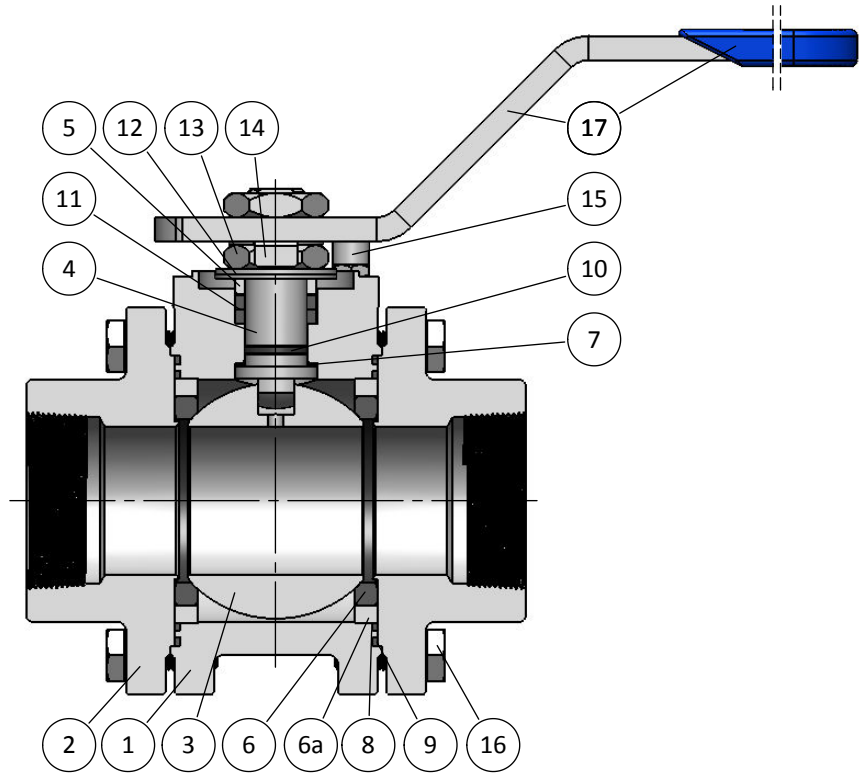
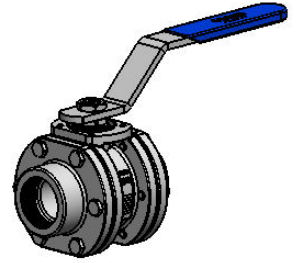


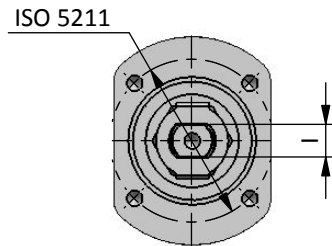
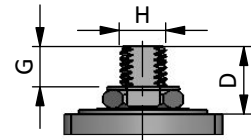
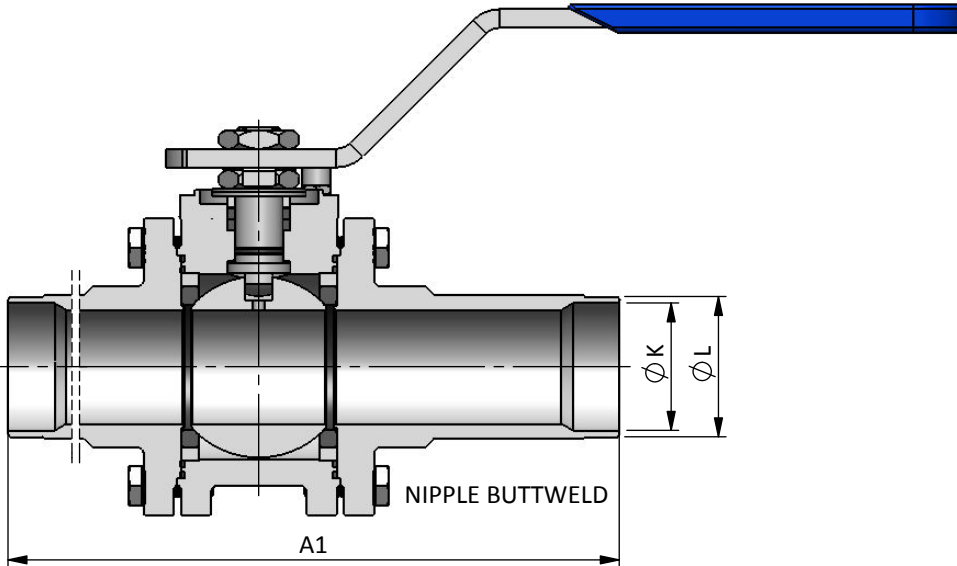
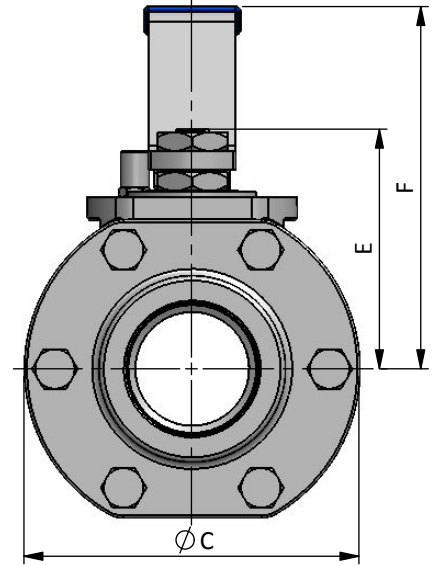
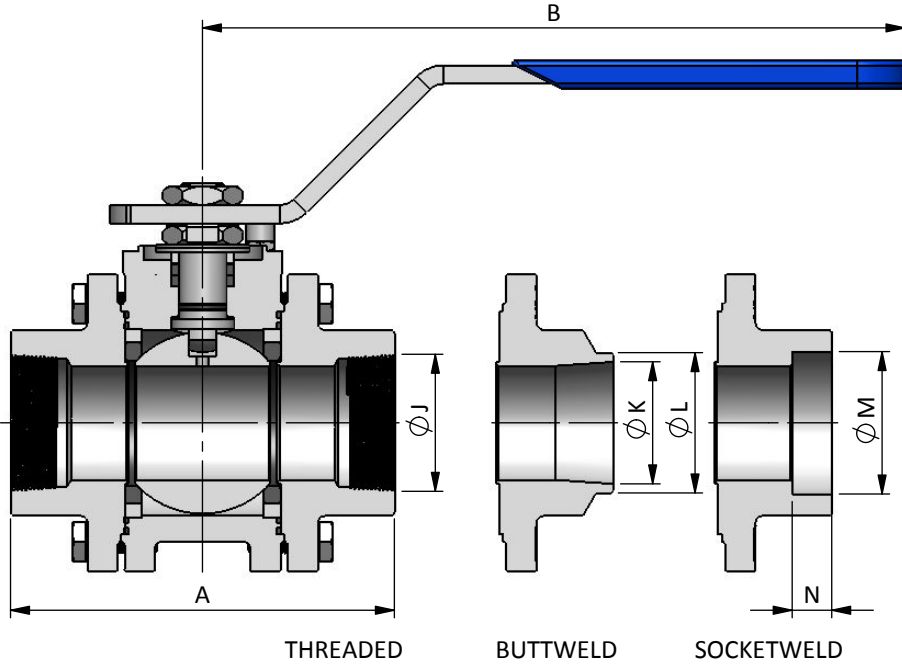
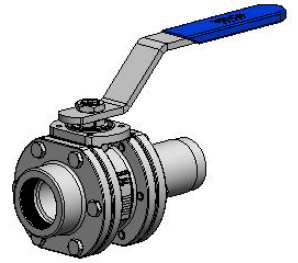
XF SERIES
CL600/400/300 (1500/1000/750 psi)
FULL BORE - DN 50 (2") ÷ 100 (4")
STANDARD
BILL OF MATERIALS



BILL OF MATERIALS

Part	Qt.	Description	CARBON STEEL VERSION	STAINLESS STEEL VERSION
1	1	Body	A216 WCB	A351 CF3M
2	2	End	A216 WCB	A351 CF3M
3	1	Ball	A351 CF8M	
4	1	Stem	A479 316-316L	
5	1	Gland Packing	A479 316-316L	
6	2	Seat	↘	CG-RPTFE
6a	2	Seat Support	A479 316-316L	
7	1	Stem Thrust Seals	↘	CG-RPTFE + PEEK
8	2	1st Body Seal	↘	CG-RPTFE
9	2	2nd Body Seal	↘	GRAPHITE
10	1	O'Ring	↘	FKM
11	1	Stem Packing Set	↘	GRAPHITE + PEEK
12	1/2	Disc Spring	STAINLESS ST. 316	
13	2	Stem Nut	STAINLESS ST. 316	
14	1	Locking Clip	STAINLESS ST. 316	
15	1	Stop Pin	STAINLESS ST. 304	
16	-	Bolt	A193 B7	A193 B8M cl.2
17	1	Handle	CARBON ST. ZINC. / VINYL	

↘ TYPICAL SPARE PARTS

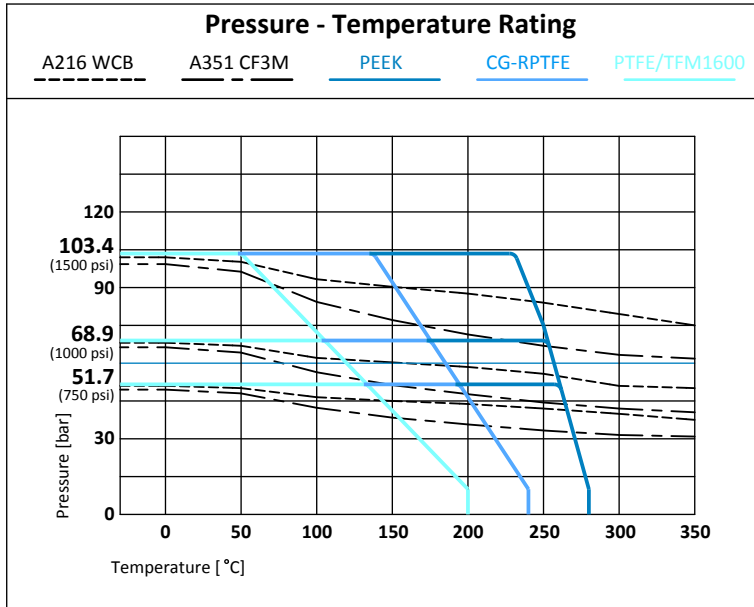


DN / Size		Dimensions								Automation				Weight Approx. [kg]	
FULL BORE		Ball Port	A	A1	B	C	D	E	F	G	H	I	ISO 5211	Short	Long
mm	inch														
50	2"	49	165	310	350	144	29	105	155	17	20	14	F07	10.5	11.5
65	2½"	62	190	330	350	174	41	135	185	25	24	18	F07	17.5	19.0
80	3"	75	215	350	350	194	36	145	200	23	24	18	F10	25.5	26.5
100	4"	100	265	390	500	244	50	185	235	28.5	30	22	F10	45.0	47.0

DN / Size		Connections					
mm	inch	J	K	L	M	N	
50	2"	NPT - BSPT - BSP	BW ASME - BW ISO		61.2	17	
65	2½"						
80	3"						
100	4"						

XF SERIES

CL600/400/300 (1500/1000/750 psi)
 FULL BORE - DN 10 (3/8") ÷ 100 (4")
 REDUCED BORE - DN 15 (1/2") ÷ 50 (2")
TECHNICAL SPECIFICATIONS



Seat Options		
Material	mOT* [°C]	MOT* [°C]
PTFE / TFM 1600	-196	200
CG-RPTFE	-196	240
PEEK	-40	280

*mOT - minimum Operating Temperature.
 Standard version recommended up to -46 °C
 Extended version recommended up to -101 °C
 *MOT - Maximum Operating Temperature at 10 bar

DN	Rating
FB 10 (3/8") to 50 (2") RB 15 (1/2") to 50 (2")	103.4 bar / 1500 psi
FB 65 (2") to 80 (3")	68.9 bar / 1000 psi
FB 100 (4")	51.7 bar / 750 psi

DN / Size				Torque Valve Figure [Nm]						Maximum Allowable Stem Torque [Nm]					Flow Coefficient Cv
FULL BORE		REDUCED BORE		CG-RPTFE						316	F51	F55	17.4	718	
mm	inch	mm	inch	BTO	RTO	ETO	BTC	RTC	ETC	MAST					
10	3/8"	15	1/2"	6	4	4	4	3	5	16	25	30	40	53.5	8
15	1/2"	20	3/4"	8	5	6	6	4	7	16	25	30	40	53.5	13
20	3/4"	25	1"	12	8	8	8	7	10	29.5	45	55	71.5	98.5	27
25	1"	32	1 1/4"	18	12	13	13	10	15	29.5	45	55	71.5	98.5	41
32	1 1/4"	40	1 1/2"	30	20	21	21	17	26	82.5	125	150	200	275	77
40	1 1/2"	50	2"	39	25	27	27	21	33	82.5	125	150	200	275	96
50	2"	-	-	46	30	32	32	25	39	110	240	290	385	535	162
65	2 1/2"	-	-	70	46	49	49	39	60	205	445	540	715	1000	267
80	3"	-	-	82	53	57	57	45	70	205	445	540	715	1000	390
100	4"	-	-	96	62	67	67	53	82	405	880	1075	1420	1950	700

CERTIFICATION	CONSTRUCTION STANDARDS	TEST STANDARDS
CE Certification acc. to PED 2014/68/EU Fire Safe Design acc. to API 607Ed.6/ISO 10497 ATEX II 2GD Design acc. to 2014/34/EU Fugitive Emissions Class B acc. to ISO 15848 CO1 (-46 °C to RT) Quality System Certified acc. to ISO 9001	ASME B16.34 ASME B1.20.1 ISO 7-1 ISO 228-1 ASME B16.25 ASME B36.10M ASME B16.11 ISO 5211	Valves are tested according to: EN 12266-1 Rate A and API 598 TESTS APPLIED: Hydrostatic and Pneumatic EN 10204 type 3.1 Certificate

Last revision available