

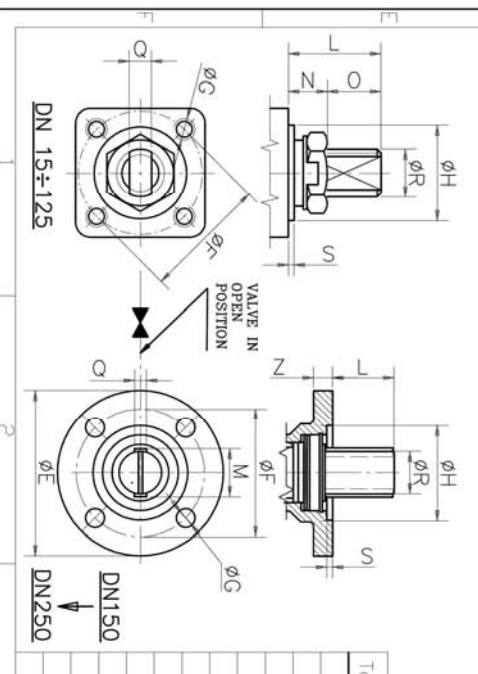
Minimum shell thickness in accordance with BS 5351

FIRE SAFE VALVES ACCORDING TO "API 607" or TO "BS 6755 P.2"


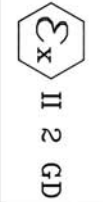

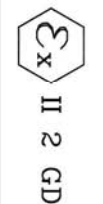
PAINTING Primer VIBROX RAL 5015 (T<sub>h</sub>=30µm)


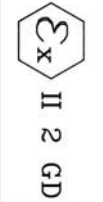

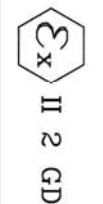
**CONFIDENTIAL**  
Duplicating, copying or disclosure to third party a part or the whole of, or any information derived from this drawing must have DAFRAM's written permission

DN	15	20	25	32	40	50	65	80	100	125	150	200	250
DP	15	20	25	30	38	51	65	76	102	125	152	203	254
DE	14	19	25	30	38	51	65	76	102	120	152	203	254
A	98	106	115	129	148	158	171	209	225	239	--	--	--
B	108	117	127	140	165	203	222	241	305	356	394	457	533
C	230	230	258	260	330	330	330	400	400	700	--	--	--
D	43	46	54,5	56	59	76	79,5	87	113	158	174	200	266,5
E	31	40,3	45	47,5	63	73,5	82	110	131	144	216	254,5	309
Pos. Kg	2,7	4,0	5,8	7	11,3	16	28	41	54	65	118	149	235



Tolerances		DN	15	20	25	32	40	50	65	80	100	125	150	200	250
ØE	-	ØE	-	-	-	-	-	-	-	-	-	-	-	175	210
ØF	36	ØF	36	50	50	70	70	70	70	102	102	125	140	140	165
M5	M5	M5	M5	M6	M6	M8	M8	M8	M8	M10	M10	M12	18	18	22
ØH	25	ØH	25	35	35	55	55	55	55	70	70	85	100	100	130
L	19,5	L	25,6	34,5	34,5	38	38	44	50	50	50	65	65	85,5	85,5
M	-	M	-	-	-	-	-	-	-	-	-	52	52	63	63
N	8,8	N	12,8	13,8	13,8	14,2	14,2	13,7	17,2	17,2	17,2	-	-	-	-
O	10,7	O	12,8	20,7	20,7	23,8	23,8	30,3	32,8	32,8	32,8	-	-	-	-
Q	6	Q	8	8	8	12	12	16	20	20	20	14	14	16	16
R	10	R	12	18	18	22	22	30	36	36	36	45	45	55	55
S	2	S	2	2	2	2	2	2	2	2	2	6	6	6	6
Z	-	Z	-	-	-	-	-	-	-	-	-	24	24	24	24

DN >= 32, MARKING:    

DN <= 25, MARKING:    

DAFRAM VALVOLE A SFERA MILANO

DAFRAM S.p.A. VALVOLE A SFERA MILANO

Partecolpito FROM BAR ANSI 150RF

Scale: 1:1

150TM.9

JOHN CLARK VALVES LTD

Scale: 1:1

TM

AF000790

ST.D. PARTS	Pos.	PART NAMES DESIGNATION	MATERIALS
38	38	TOP FL. PRIMARY GASKET	PTFE
37	37	TOP FL. SECOND GASKET	EXPANDED GRAPHITE
36	36	UPPER STEM BUSH	C.S.+PTFE
35	35	SPRING	50 Cr V4
31	31	STEM SEAL RING	PTFE
30	30	TOP FLANGE PIN	C.S.
29	29	ADAPTER PLATE	ASTM A350 gr.LF2
28	28	TOP FLANGE SCREWS	ASTM A105
27	27	TOP FLANGE	A2/70
26	26	STEM KEY	ASTM A105
20	20	STEM O-RING	C.S.
19	19	PRIMARY BODY GASKET	VITON
18	18	STOP SCREWS	PTFE
17	17	BOLTS	8.8
16	16	NUTS	ASTM A320 gr.L7
15	15	ANTISTATIC DEVICE	ASTM A193 gr.B7
14	14	LOCK WASHER	ASTM A194 gr.2H
13	13	SPACER	ASTM A182 gr.F316
12	12	SECONDARY BODY GASKET	G.C.S.
11	11	UPPER STEM SEAL	G.C.S.
10	10	LOWER STEM SEAL	EXPANDED GRAPHITE
9	9	STOP	RPTFE
8	8	SEAT	G.C.S.
7	7	WRENCH	PTFE
6	6	WRENCH NUT	C.S.
5	5	GLAND NUT	G.C.S.
4	4	STEM	G.C.S.
3	3	BALL	ASTM A182 gr.F316
2	2	BODY CONNECTOR	ASTM A182 gr.F316 or A351 gr.CRFM
1	1	VALVE BODY	ASTM A350 gr.LF2
			ASTM A350 gr.LF2
			ASTM A105