
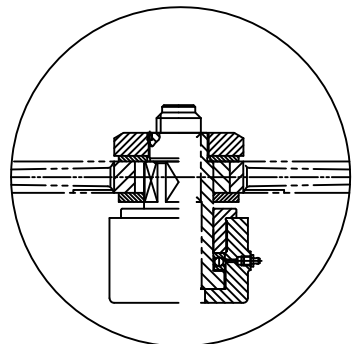
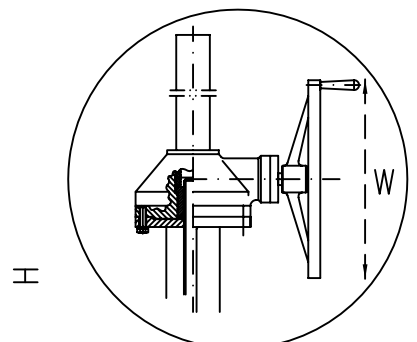



Class		300LB	
Test Pressure	Shell Test	75	BAR
	High Pressure	55	
	Back Seat	55	
	Low Pressure	6	

Technical Requirements:

1. Design & Manufacture to: BS1873
2. Press/Temp to ANSI B16.34
3. Face to face to ANSI B16.10
4. Flange Dimensions to ASME B16.5
5. Test & Inspection to API 598/ISO 5208
6. NACE MR-01-75 (Latest Revision)
7. Conform to Pressure Equipment Directive 2014/68/EU 



24	Rivet	BL2/Cu
23	Name Plate	1Cr18Ni9Ti/304
22	Grub Screw	Gr.22H
21	Nut	Gr 8
20	Gasket	200HV
19	Handwheel	ASTM A395
18	Stem Nut	A439 D2
17	Packing Gland	ASTM A216 WCB
16	Packing Plate	ASTM 276 410
15	Packing	Flexible Graphite
14	Nut	ASTM A194 2HM
13	Eye Bolt	ASTM A193 B7M
12	Pin	35
11	Back Seat	ASTM A182 F6
10	Bonnet	ASTM A216 WCB
9	Gasket	Graphite + St/St
8	Stud Bolting	ASTM A193 B7M
7	Nut	ASTM A194 2HM
6	Stem	ASTM A182 F6
5	Thrust Cover	35
4	Thrust Gasket	304 St/St
3	Disc	ASTM A216 WCB+F6
2	Seat	A105 + Stellite
1	Body	ASTM A216 WCB

Size (Inch)	2"	2 1/2"	3"	4"	6**	8**	10**	12**	14"	16"	CL300 Globe Valve OS & Y Bolted Bonnet Rising Stem	
L(RF)(BW)	267	292	318	356	445	559	622	711	787	914	Issue No 3	
L(RTJ)	283	308	333	371	460	575	638	727	803	930	Fecha/Date 15.08.17	
H (Open)	365	426	430	519	662	720	908	990	1480*	1620*	Fig No	
W	200	250	250	300	400	560/460*	560/460*	560/530*	640/530*	640/530*	GLC300	
Weight	(RF)	31	43	60	91	190	370	530	720	880	997	
	(BW)	24	36	50	76	154	332	441	585	695	785	