
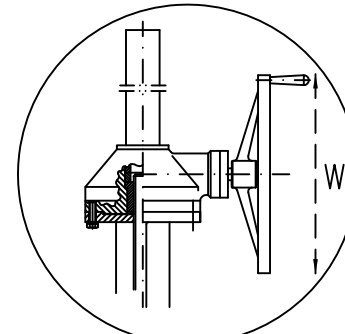


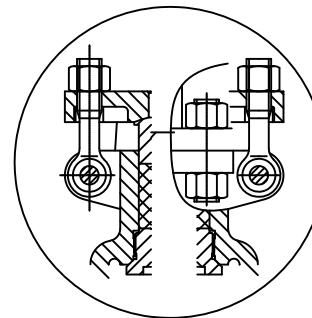
Class		300LB	
Test Pressure	Shell Test	75	BAR
	High Pressure	55	
	Back Seat	55	
	Low Pressure	6	

Technical Requirements:

1. Design & Manufacture to: API 600/BS EN ISO 10434:2004
2. Press/Temp to ANSI B16.34
3. Face to face to ANSI B16.10
4. Flange Dimensions to ASME B16.5
5. Test & Inspection to API 598/ISO 5208
6. NACE MR-01-75 (Latest Revision)
7. Conform to Pressure Equipment Directive 2014/68/EU 




Manual Gearbox Operator *



2 Piece Bonnet **

23	Rivet	BL2/Cu
22	Name Plate	1Cr18Ni9Ti/304
21	Eye Bolt	ASTM A193 B7M
20	Nut	ASTM A194 2HM
19	Hex Nut	C/Steel
18	Inner Hex Nut	ASTM A276 304
17	Handwheel	ASTM A395
16	Bearing Gland	AISI 1035
15	Stem Nut	A439 D2
14	Grease Nipple	Cu
13	Packing Gland	ASTM A216 WCB
12	Packing Plate	ASTM 276 410
11	Pin	AISI1035
10	Packing	Flexible Graphite
9	Back Seat	ASTM A182 F6
8	Bonnet	ASTM A216 WCB
7	Gasket	Graphite + St/St
6	Stud Bolting	ASTM A193 B7M
5	Nut	ASTM A194 2HM
4	Stem	ASTM A182 F6
3	Wedge	ASTM A216 WCB+F6
2	Seat	A105 + Stellite
1	Body	ASTM A216 WCB

F	Size (Inch)	2"	2 1/2"	3"	4"	6"	8"	10**	12**	14**	16**	18**	20**	24**	CL300 Gate Valve OS & Y Bolted Bonnet Rising Stem			
	L(RF)(BW)	216	241	283	305	403	419	457	502	762	838	914	991	1143			Issue No	3
	L(RTJ)	232	257	298	321	419	435	473	518	778	854	930	1010	1165			Fecha/Date	15.10.16
	H (Closed)	352	390	420	496	635	772	995/1375*	1090/1524*	1265/1718*	1385/1860*	1510/2077*	1630/2310*	2809*				
	W	250	250	250	300	400	450	500/460*	600/460*	650/460*	750/460*	750/460*	920/460*	600*			Fig No	GAC300-8
	Weight	(RF)	30	39	55	80	137	220	360	460	740	1010	1445	1745			2820	
	(BW)	24	35	40	53	110	170	268	470	610	860	1190	1606	2400				