

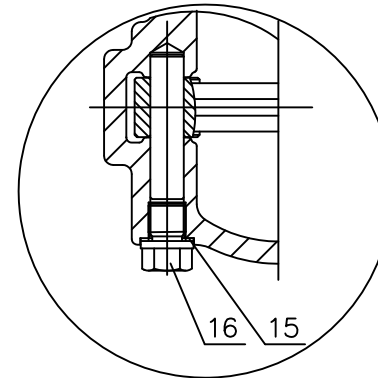
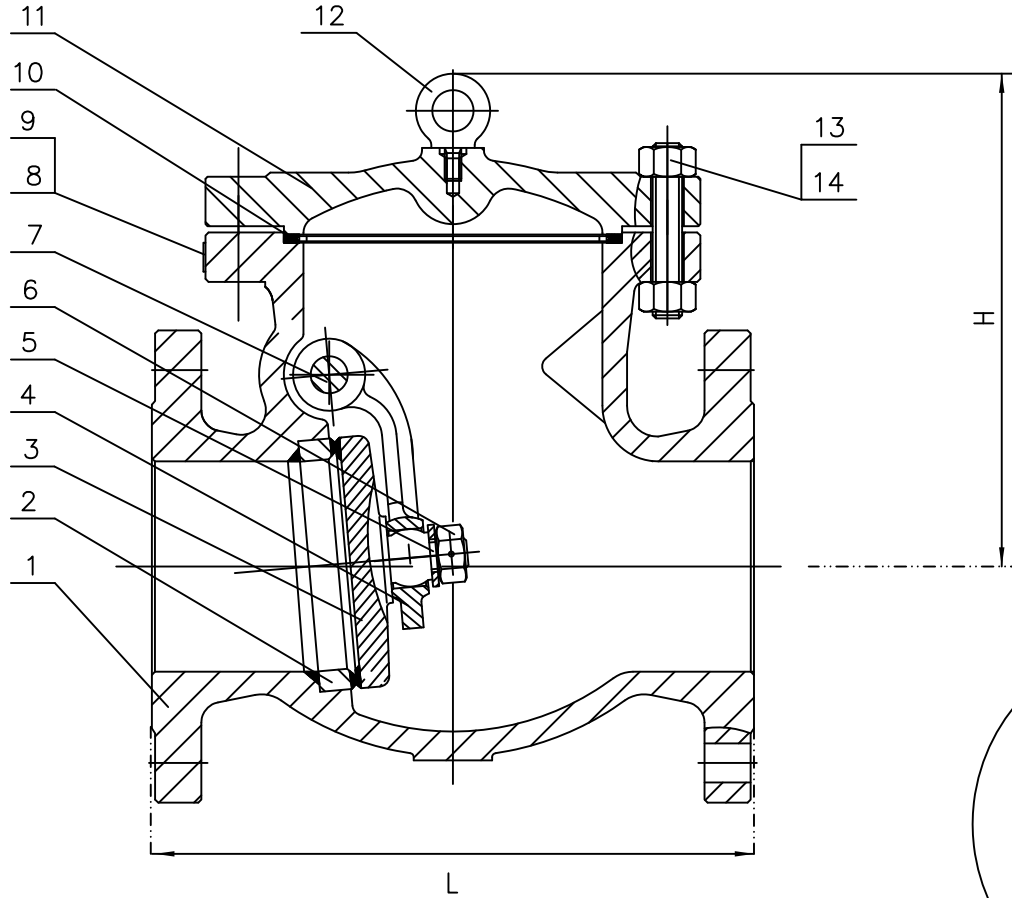
### Technical Requirements:

1. Design & Manufacture to: BS 1868
2. Press/Temp to ANSI B16.34
3. Face to face to ANSI B16.10
4. Flange Dimensions to ASME B16.5
5. Test & Inspection to API 598/ISO 5208
6. NACE MR-01-75 (Latest Revision)
7. Conform to Pressure Equipment Directive 2014/68/EU



Class		150LB	
Test Pressure	Shell Test	30	BAR
	High Pressure	22	
	Back Seat		
	Low Pressure		

16	Plug	ASTM A276 316 St/St
15	Gasket	ASTM A276 316 St/St
14	Stud Bolt	ASTM A193 L7M
13	Nut	ASTM A194 7M
12	Eye Bolt	ASTM A29-1035
11	Bonnet	ASTM A352 LCC
10	Gasket	316 St/St - Graphite
9	Name Plate	304 St/St
8	Rivet	304 St/St
7	Pin	ASTM A276-316
6	Nut	ASTM A276-316
5	Washer	ASTM A276-316
4	Hinge	ASTM A352 LCC
3	Disc	A352 LCC + Stellite
2	Seat	LF2 + Stellite
1	Body	ASTM A352 LCC
Pos	PART NAMES:	MATERIALS:



Size (Inch)	2"	2 1/2"	3"	4"	6"	8"	10"	12"					Customer:	Order No:	
L(RF)(BW)	203	216	241	292	356	495	622	698					CL150 Swing Check Valve Bolted Cover		
H (Approx)	144	150	168	235	277	339	398	525					Issue No	Rev 3	
													Fecha/Date	13.06.19	
Weight	(RF)	17	26	27	42	93	135	200	310				Fig No		
	(BW)	12	17	18	32	78	116	174	258				CKLC150-16		

