

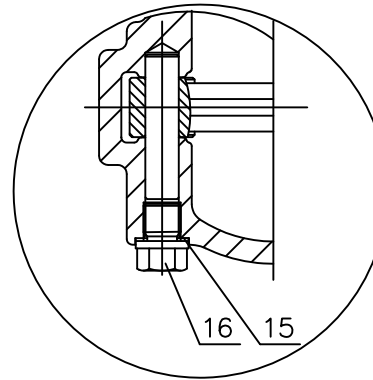
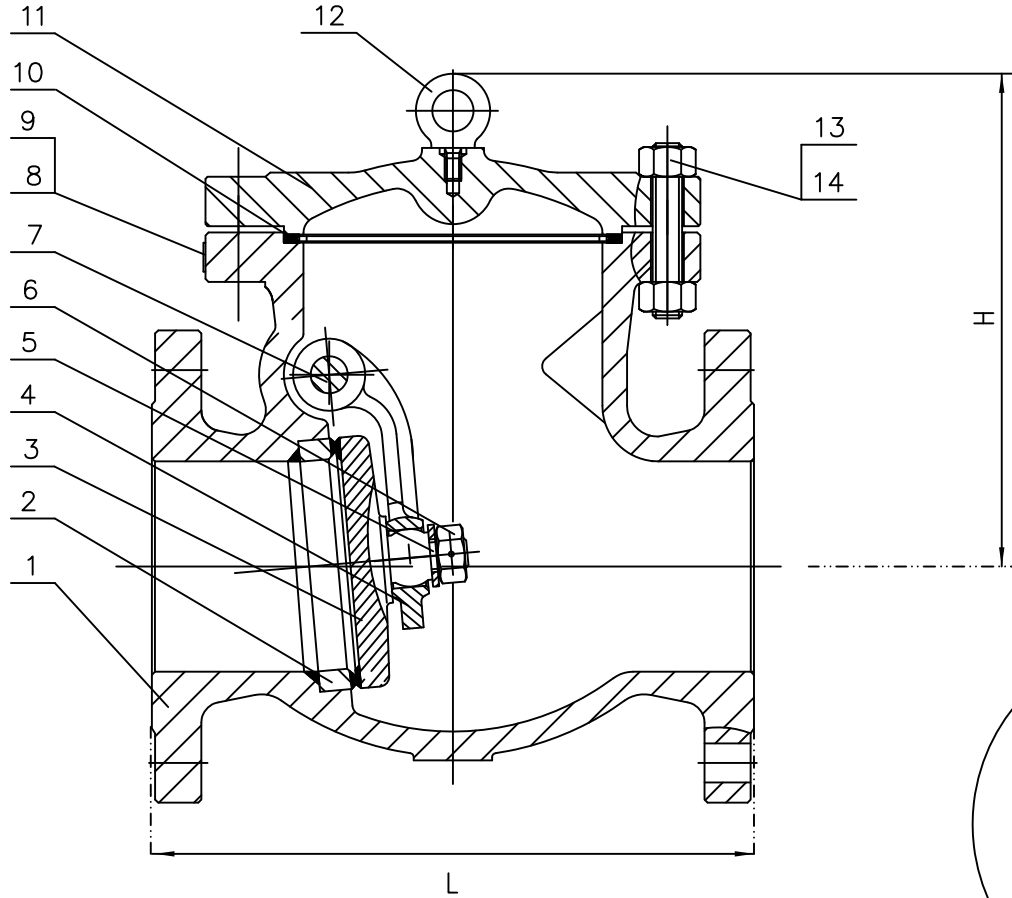
Technical Requirements:

1. Design & Manufacture to: BS 1868
2. Press/Temp to ANSI B16.34
3. Face to face to ANSI B16.10
4. Flange Dimensions to ASME B16.5
5. Test & Inspection to API 598/ISO 5208
6. NACE MR-01-75 (Latest Revision)
7. Conform to Pressure Equipment Directive 2014/68/EU



Class		150LB	
Test Pressure	Shell Test	30	BAR
	High Pressure	22	
	Back Seat		
	Low Pressure		

16	Plug	ASTM A276 410
15	Gasket	ASTM A276 304 St/St
14	Stud Bolt	ASTM A193 B7M
13	Nut	ASTM A194 2HM
12	Eye Bolt	ASTM A29-1035
11	Bonnet	ASTM A216 WCB
10	Gasket	304 St/St - Graphite
9	Name Plate	304 St/St
8	Rivet	304 St/St
7	Pin	ASTM A276-410
6	Nut	ASTM A276-410
5	Washer	ASTM A276-410
4	Hinge	ASTM A216 WCB
3	Disc	A105 + F6 13% Chr
2	Seat	A105 + Stellite
1	Body	ASTM A216 WCB
Pos	PART NAMES:	MATERIALS:



Size (Inch)	2"	2 1/2"	3"	4"	6"	8"	10"	12"	14"	16"	18"	20"	24"	
L(RF)(BW)	203	216	241	292	356	495	622	698	787	864	978	978	1295	
H (Approx)	144	150	168	235	277	339	398	525	553	584	668	712	740	
Weight	(RF)	17	26	27	42	93	135	200	310	428	570	775	905	1300
	(BW)	12	17	18	32	78	116	174	258	368	483	685	783	1150

Customer: _____ Order No: _____

CL150 Swing Check Valve Bolted Cover

Issue No	Rev 3
Fecha/Date	15.08.17

Fig No
CKC150-8